

SOUNDPROOFING TIMBER FLOOR COVERINGS



Enhancing living comfort
with REGUPOL impact
sound insulation



UNVEIL THE BEAUTY OF TIMBER WITH REGUPOL ACOUSTIC SOLUTIONS

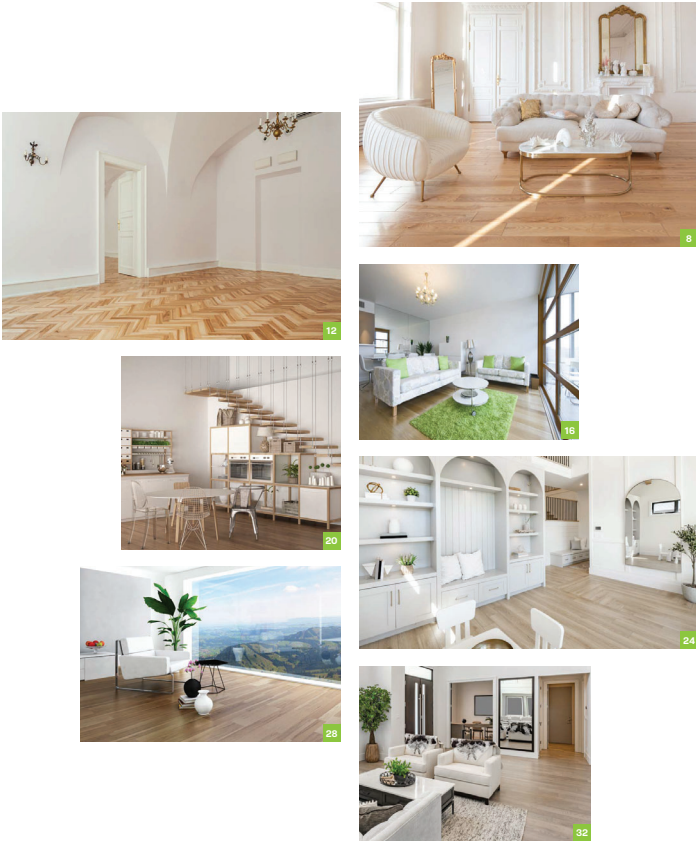
Timber flooring is indeed a sought-after option for those who appreciate the warmth and elegance it brings to a home. In the context of apartment living, the role of acoustic underlay cannot be overstated. It is not merely an accessory; it is a critical component that ensures a harmonious living environment.

The selection of an acoustic underlay should be made with care, considering factors such as the quality and composition of the material, which contribute to its sound-dampening properties. The right underlay can significantly reduce the transmission of impact noise, making it a vital consideration for enhancing the quality of life for both the residents and their neighbours. It's a blend of science and consideration, creating a peaceful coexistence within a community living space.

Collaboration is at the heart of **REGUPOL's** approach; by combining our extensive experience and technical knowledge with the unique requirements of each project. This commitment to working closely with our clients underscores a shared goal: to achieve superior acoustic performance that makes floors sound great.

We've got it covered.

KEY TOPICS AT A GLANCE



9 REGUPOL sonus multi 4.5
ALL-ROUNDER FOR IMPACT SOUND ISOLATION

13 REGUPOL sonus eco 5
BEST OF BOTH WORLDS WITH RUBBER AND CORK

17 REGUPOL sonus core 5
THE GO-TO COST EFFICIENT SOLUTION

21 REGUPOL sonus core 10-S
HIGH VERSATILITY AND PERFORMANCE

25 REGUPOL sonus curve 6
VALUE ENGINEERED FOR LONG TERM PERFORMANCE

29 REGUPOL sonus curve 8
A SOUND CHOICE FOR HIGH PERFORMANCE

33 REGUPOL sonus curve 17
THE HIGHEST PERFORMING SOLUTION



REGUPOL SONUS

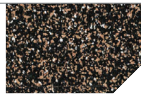
Our products with various timber floors are tested as follows and our acoustic performance is based on bare slab results only.

Existing buildings working under Strata Bylaws might include Ln,w, L'nT,w, IIC, FIIC or AAC Star Ratings performance requirements, all of which can only be verified on-site by testing.

Before installation, all materials should be checked for compatibility and tested for suitability to the prevailing site conditions.

The flooring system installed over the **REGUPOL sonus** acoustic underlay must be approved by the flooring manufacturer and checked for compatibility and warranty.

The **REGUPOL sonus curve** range may require plywood between the timber floor and the underlay.

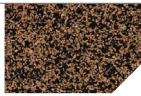


SONUS MULTI 4.5

All rounder for impact sound isolation

A sustainable solution made from pre-consumer polyurethane foam and cork elastomers.

- ⦿ Compatible with most types of floor finishes
- ⦿ Lightweight for easy install
- ⦿ A 3 mm variant available for resilient floor finishes

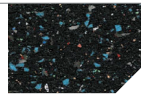


SONUS ECO 5

Best of both worlds with rubber and cork

An effective acoustic barrier to install parquetry and timber floors directly to the surface finish.

- ⦿ Made from end of life tyre and cork elastomers
- ⦿ Natural cork recovery
- ⦿ Excellent adhesion



SONUS CORE 5

The go-to, cost efficient solution

One of our most sustainable solutions, made of post-consumer end of life tyres.

- ⦿ Most popular under engineered timber flooring and laminates
- ⦿ Excellent value for money

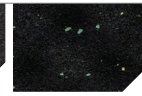


SONUS CORE 10-S

High versatility and performance

Popular mid-range performer under bonded screed beds and commercial screeds.

- ⦿ Sustainably made from post-consumer end of life tyres
- ⦿ Acoustic systems available for CLT wooden slabs

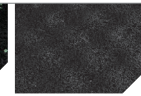


SONUS CURVE 6

Value engineered for long term performance

The thinnest curve version, suitable for constructions with limited floor heights.

- ⦿ Sustainably made of post-consumer end of life tyres
- ⦿ Excellent acoustic performance across a long service life



SONUS CURVE 8

A sound choice for high performance

The curve profile provides effective impact sound performance within low construction flooring build-ups.

- ⦿ Excellent re-use of post-consumer end of life tyres
- ⦿ Also suitable as a custom build-up under plywood and cement sheeting



SONUS CURVE 17

The highest performing solution

The highest performing system under timber floors (with plywood separation).

- ⦿ Made from up to 90% post-consumer end of life tyres
- ⦿ 3D dimple profile effectively reduces impact sound

| | | | | | | | | |
|---|---------------------------|----------|----------|----------|----------|----------------|----------------|-----------------|
| Engineered Timber (14 mm) *over 150 mm bare slab | ΔLw Improvement dB | ΔLw 17dB | ΔLw 17dB | ΔLw 18dB | ΔLw 18dB | ΔLw 17dB | ΔLw 18dB | |
| | IIC | 50 | 51 | 52 | 50 | 51 | 53 | |
| | Thickness | 4.5 mm | 5 mm | 5 mm | 10 mm | 6/3 mm dimpled | 8/4 mm dimpled | |
| | Lab Result Ln,w | 60 | 59 | 58 | 58 | 58 | 57 | |
| Parquetry (19 mm) *over 150 mm bare slab | ΔLw Improvement dB | | ΔLw 20dB | | | | | |
| | IIC | | 54 | | | | | |
| | Thickness | | 5mm | | | | | |
| | Lab Result Ln,w | | 56 | | | | | |
| Solid Timber (19 mm) over Plywood layer (18 mm) (sample only) *over 170 mm bare slab | ΔLw Improvement dB | | | | | ΔLw 23dB | | ΔLw 27dB |
| | IIC | | | | | 50 | | 55 |
| | Thickness | | | | | 6/3 mm dimpled | | 17/8 mm dimpled |
| | Lab Result Ln,w | | | | | 57 | | 53 |
| Laminate (8 mm) *over 150 mm bare slab | ΔLw Improvement dB | ΔLw 19dB | ΔLw 19dB | ΔLw 19dB | ΔLw 20dB | | | |
| | IIC | 50 | 50 | 51 | 51 | | | |
| | Thickness | 4.5 mm | 5 mm | 5 mm | 10 mm | | | |
| | Lab Result Ln,w | 60 | 60 | 59 | 58 | | | |

This product selector should be used as a general guide only. For more information, contact REGUPOL on 02 4624 0050 or visit www.acoustics.regupol.com.au
Test reports at <https://acoustics.regupol.com.au/downloads/test-reports/>

ALL ROUNDER FOR IMPACT SOUND ISOLATION



REGUPOL SONUS MULTI 4.5

Suitable for green buildings, the **REGUPOL sonus multi 4.5** is a sustainable product made from pre-consumer polyurethane foam and cork elastomer bound with polyurethane.

coverings such as carpet tiles, ceramic tiles, stone, marble, laminate, engineered timber and more.

This environmentally preferable product has been independently certified as meeting the requirements of Good Environmental Choice Australia GECA FCv3.0-2021 Floor Coverings Standard.

REGUPOL sonus multi 4.5 is an acoustic underlay developed for its unique material composition which allows it to be a compatible surface to bond approved floor



Available in:
 Rolls 1m x 20m
 Modular Tiles 1050mm x 500mm
 Thickness 4.5mm

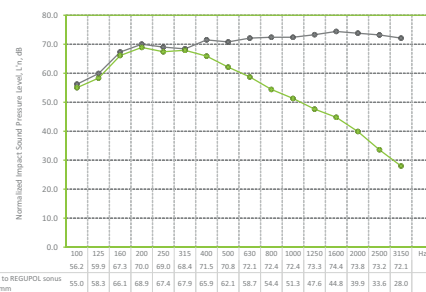
ACOUSTICAL PERFORMANCE

ENGINEERED TIMBER Normalised Impact Sound Pressure Levels
 Tested at CSIRO Clayton, in accordance with ISO 140-8:2006 (E), ISO 140-6-2006, AS ISO 717.2-2004, ASTM E989-89.
 Test area 10.8m². Results can vary when different floors are installed and/or if bonded.

REPORT RG086

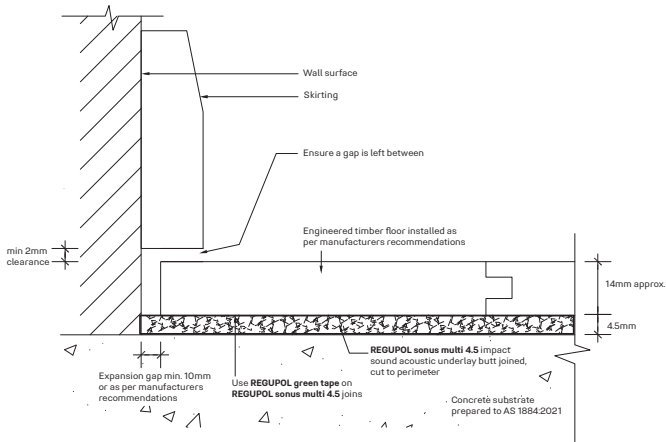
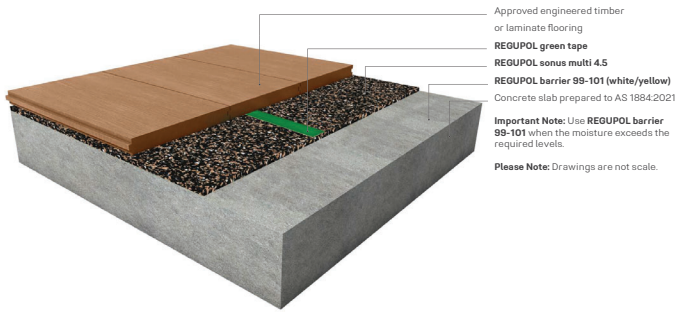
Layer of 14mm engineered timber (floating), to **REGUPOL sonus multi 4.5mm**, to 150mm concrete slab (no ceiling).

Ln,w 60dB
 ΔLw 17dB
 50 IIC



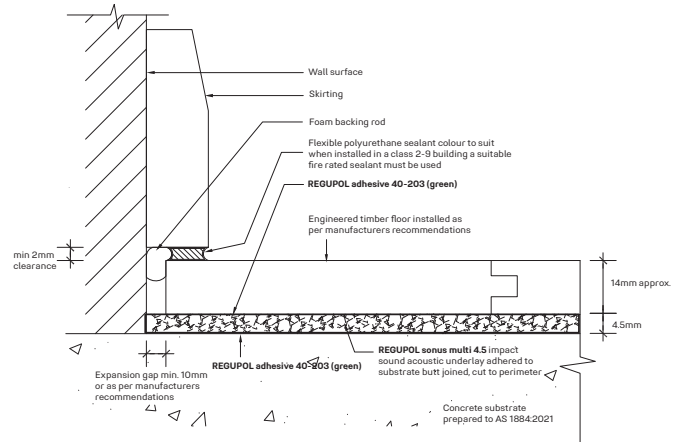
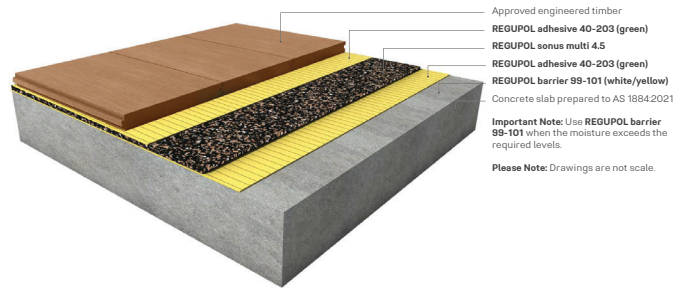
NON-BONDED ENGINEERED TIMBER OR LAMINATE

This **REGUPOL sonus multi 4.5** system reflects a typical residential application with approved engineered timber or laminate floor coverings. For all other applications please contact **REGUPOL** acoustic division.



DUAL BOND ENGINEERED TIMBER

This **REGUPOL sonus multi 4.5** system reflects a typical residential application with approved engineered timber floor coverings. For all other applications please contact **REGUPOL** acoustic division.





BEST OF BOTH WORLDS WITH RUBBER AND CORK

REGUPOL SONUS ECO 5

REGUPOL sonus eco 5 is a high performance acoustic underlay, designed to reduce the transmission of impact sound generated by footfall noise.

REGUPOL sonus eco 5 can be installed under approved traditional block parquetry, laminate and engineered timber floors.

Suitable for green buildings, the **REGUPOL sonus eco 5** is a sustainable product made from post-consumer end of life tyre and cork elastomers bound with polyurethane.



This environmentally preferable product has been independently certified as meeting the requirements of Good Environmental Choice Australia GECA FCv3.0-2021 Floor Coverings Standard.



Available in:

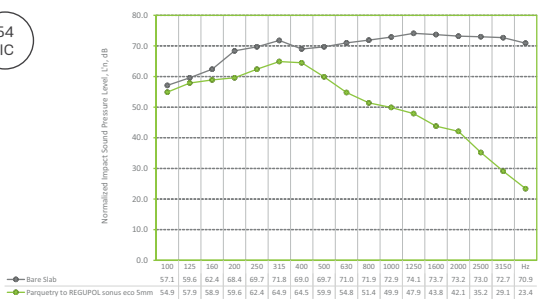
- Rolls 1m x 20lm
- Modular Tiles 1050mm x 500mm
- Thickness 5mm

ACOUSTICAL PERFORMANCE

PARQUETRY TIMBER Normalised Impact Sound Pressure Levels
 Tested at CSIRO Highett, in accordance with ISO 140-8:1997 (E), ISO 140-6, AS ISO 7172-2004, ASTM E989-89.
 Test area 11.7m². Results can vary when different floors are installed and/or if bonded.

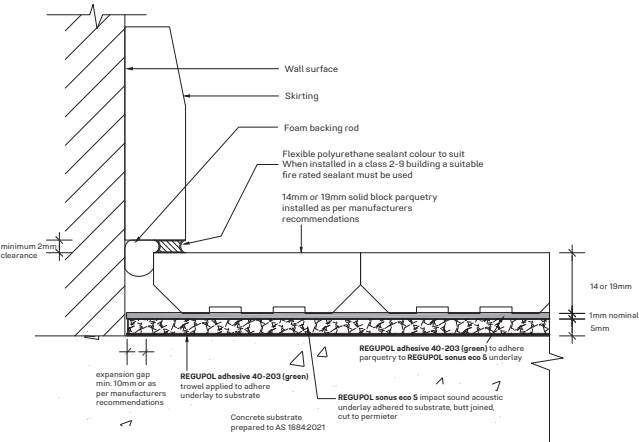
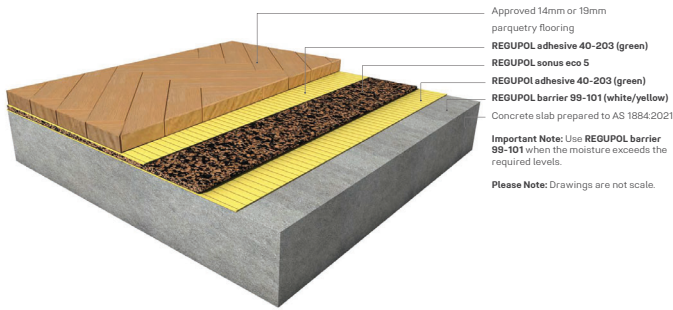
REPORT RG019
 Layer of 19mm parquetry, bonded to **REGUPOL sonus eco 5mm**, bonded to 150mm bare concrete slab (no ceiling).

$L_{n,w}$ 56dB
 ΔL_w 20dB
 54 IIC



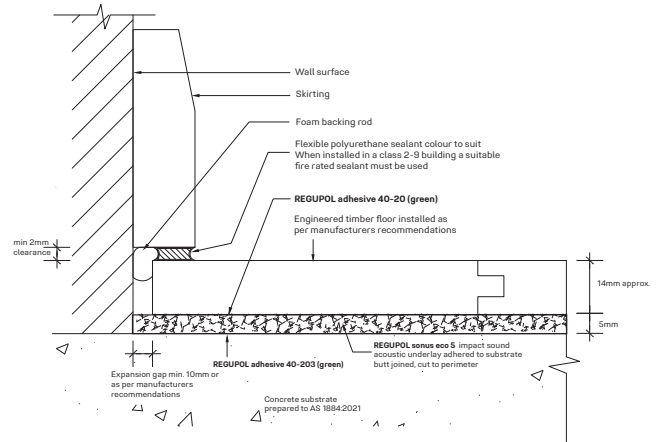
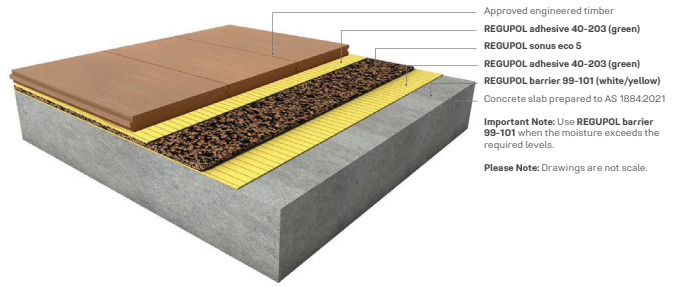
DUAL BOND PARQUETRY TIMBER

This **REGUPOL sonus eco 5** system reflects a typical residential application with approved parquetry timber floor coverings. For all other applications please contact **REGUPOL** acoustic division.



DUAL BOND ENGINEERED TIMBER

This **REGUPOL sonus eco 5** system reflects a typical residential application with approved engineered timber floor coverings. For all other applications please contact **REGUPOL** acoustic division.





THE GO-TO COST EFFICIENT SOLUTION

REGUPOL SONUS CORE 5

REGUPOL sonus core 5 is a high performance acoustic underlay, designed to reduce the transmission of impact sound generated by footfall noise.

REGUPOL sonus core 5 can be installed under bonded and unbonded screed beds, laminate and engineered timber floors.

Suitable for green buildings, the **REGUPOL sonus core 5** is a sustainable product made from post-consumer end of life tyre bound with polyurethane.



This environmentally preferable product has been independently certified as meeting the requirements of Good Environmental Choice Australia GECA FCv3.0-2021 Floor Coverings Standard.



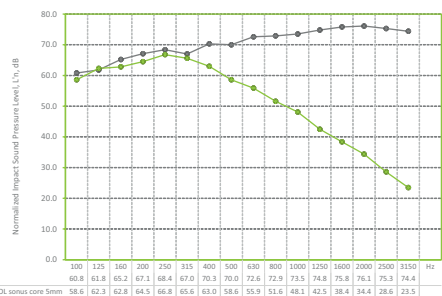
Available in:
Rolls 1.25m x 101m, 501m
Thickness 5mm

ACOUSTICAL PERFORMANCE

ENGINEERED TIMBER Normalised Impact Sound Pressure Levels
Tested at CSIRO Clayton, in accordance with ISO 140-8: 2006 (E), ISO 140-6-2006, AS ISO 717.2-2004, ASTM E989-89. Test area 10.8m². Results can vary when different floors are installed and/or if bonded.

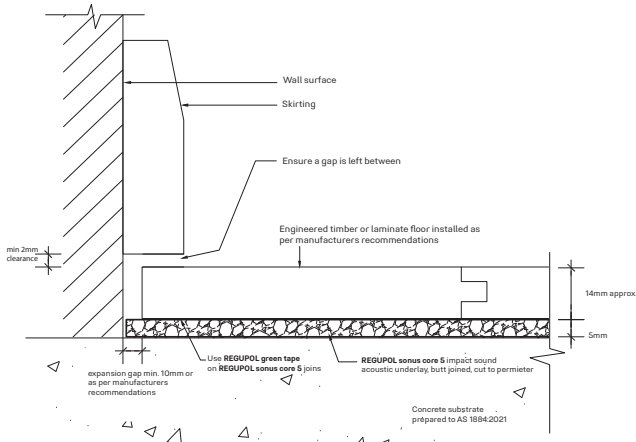
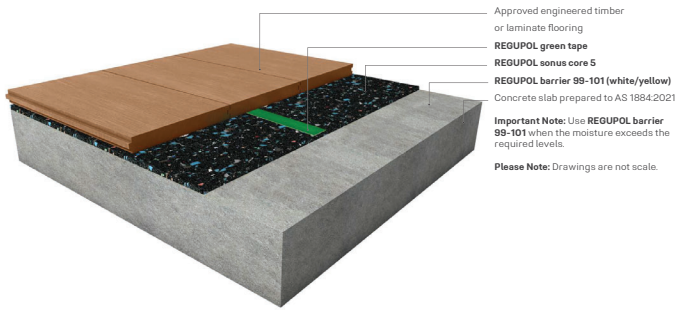
REPORT RG111
Layer of 14mm engineered timber (floating), to **REGUPOL sonus core 5mm**, to 150mm concrete slab (no ceiling).

$L_{n,w}$ 58dB
 ΔL_w 18dB
52 IIC



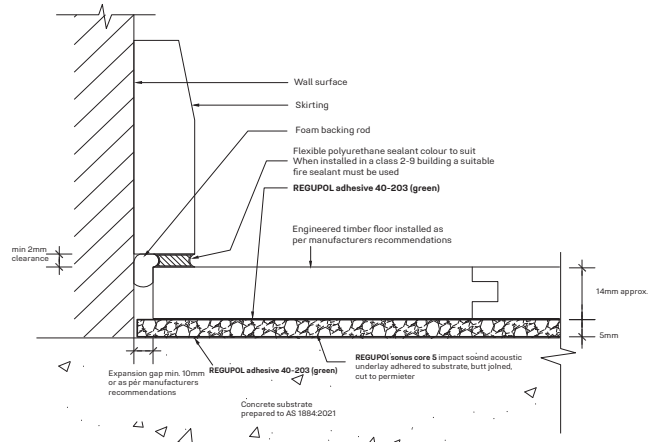
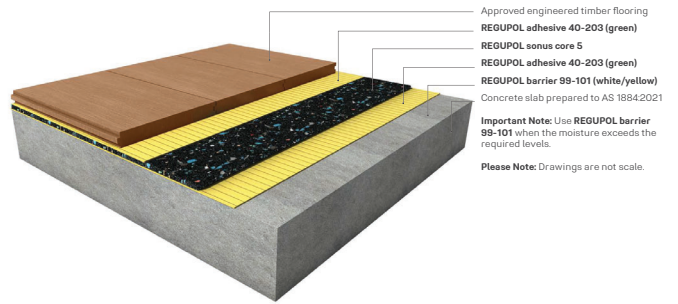
NON-BONDED ENGINEERED TIMBER OR LAMINATE

This **REGUPOL sonus core 5** system reflects a typical residential application with approved engineered timber or laminate floor coverings. For all other applications please contact **REGUPOL** acoustic division.



DUAL BOND ENGINEERED TIMBER

This **REGUPOL sonus core 5** system reflects a typical residential application with approved engineered timber floor coverings. For all other applications please contact **REGUPOL** acoustic division.





HIGH VERSATILITY AND PERFORMANCE

REGUPOL SONUS CORE 10-S

REGUPOL sonus core 10-S is a high performance acoustic underlay, designed to reduce the transmission of impact sound generated by footfall noise.

REGUPOL sonus core 10-S can be installed under bonded and unbonded screed beds, laminate and engineered timber floors.

Suitable for green buildings, the REGUPOL sonus core 10-S is a sustainable product made from post-consumer end of life tyre bound with polyurethane.

This environmentally preferable product has been independently certified as meeting the requirements of Good Environmental Choice Australia GECA FCv3.0-2021 Floor Coverings Standard.



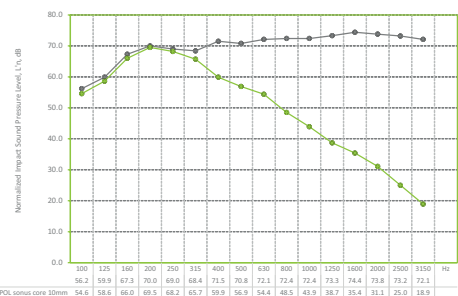
Available in:
 Rolls 1.25m x 101m, 201m
 Thickness 10mm

ACOUSTICAL PERFORMANCE

ENGINEERED TIMBER Normalised Impact Sound Pressure Levels
 Tested at CSIRO, in accordance with ISO 140-8: 2006 (E), ISO 140-6-2006, AS ISO 717.2-2004, ASTM E989-89.
 Test area 10.8m². Results can vary when different floors are installed and/or if bonded.

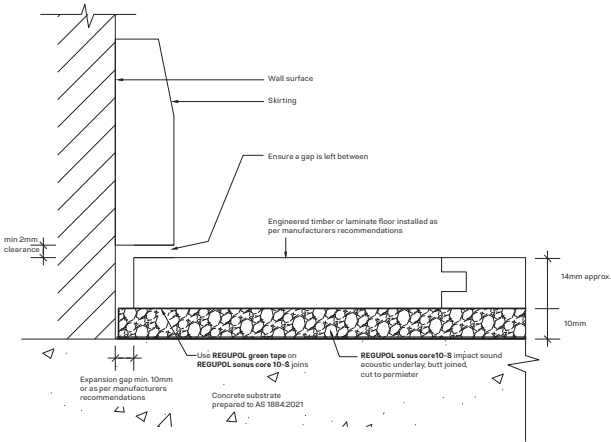
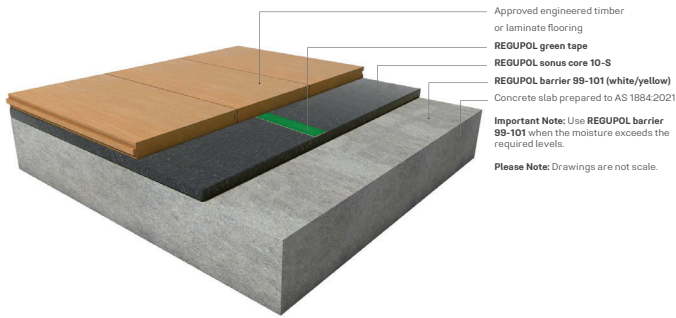
REPORT RG087
 Layer of 14mm engineered timber (floating), to REGUPOL sonus core 10mm, to 150mm concrete slab (no ceiling).

Ln,w 58dB
 ΔLw 18dB
 50 IIC



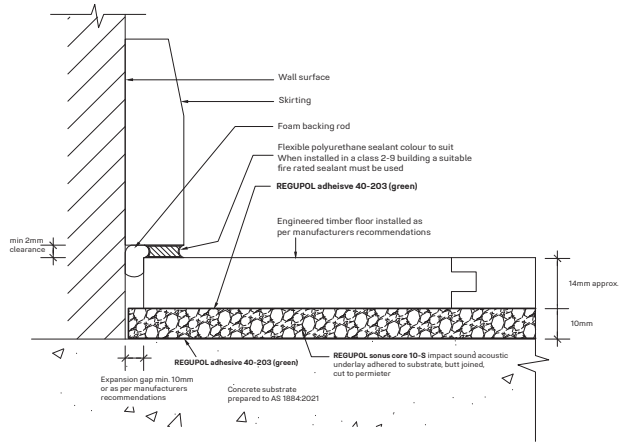
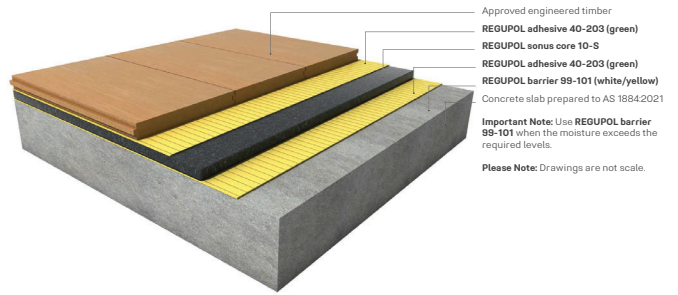
NON-BONDED ENGINEERED TIMBER OR LAMINATE

This **REGUPOL sonus core 10-S** system reflects a typical residential application with approved engineered timber or laminate floor coverings. For all other applications please contact **REGUPOL** acoustic division.



DUAL BOND ENGINEERED TIMBER

This **REGUPOL sonus core 10-S** system reflects a typical residential application with approved engineered timber floor coverings. For all other applications please contact **REGUPOL** acoustic division.





VALUE ENGINEERED FOR LONG TERM PERFORMANCE

REGUPOL SONUS CURVE 6

REGUPOL sonus curve 6 is a high performance acoustic underlay, designed to reduce the transmission of impact sound generated by footfall noise.

Suitable for green buildings, the **REGUPOL sonus curve 6** is a sustainable product made from post-consumer end of life tyre bound with polyurethane.

This environmentally preferable product has been independently certified as meeting the requirements of Good Environmental Choice Australia GECA FCv3.0-2021 Floor Coverings Standard.

REGUPOL sonus curve 6 can be installed under bonded and unbonded screed beds as a complete system with stone,

marble, tiles or selected floor coverings. Also suitable as a system under cement sheeting or plywood sheeting with selected floor coverings such as solid timber and approved engineered timber floors.



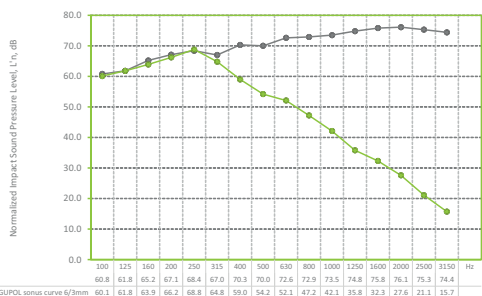
Available in:
 Rolls 1.25m x 201m
 Thickness 6mm dimpled

ACOUSTICAL PERFORMANCE

ENGINEERED TIMBER Normalised Impact Sound Pressure Levels
 Tested at CSIRO Clayton, in accordance with ISO 140-8: 2006 (E), ISO 140-6-2006, AS ISO 717.2-2004, ASTM E989-89.
 Test area 10.8m². Results can vary when different floors are installed and/or if bonded.

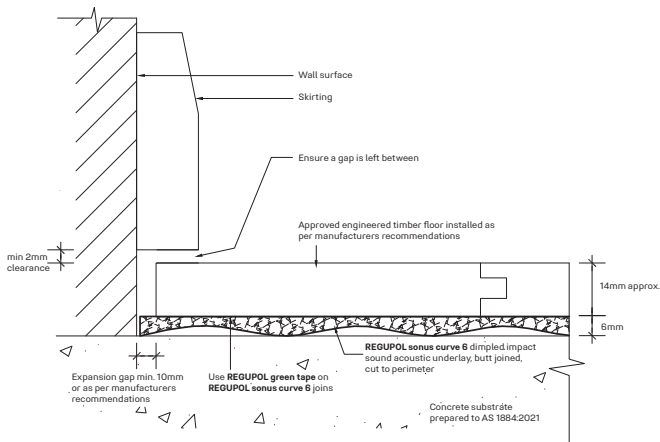
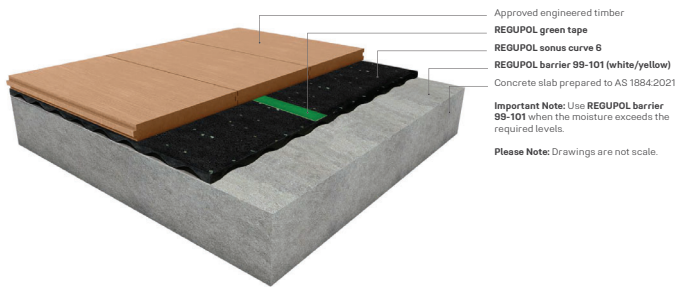
REPORT RG113
 Layer of 14mm engineered timber (floating), to **REGUPOL sonus curve 6/3mm** dimpled, to 150mm concrete slab (no ceiling).

Ln,w 58dB
 ΔLw 17dB
 51 IIC



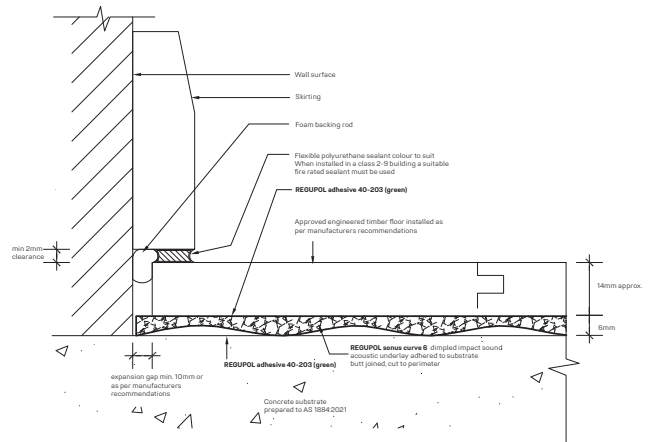
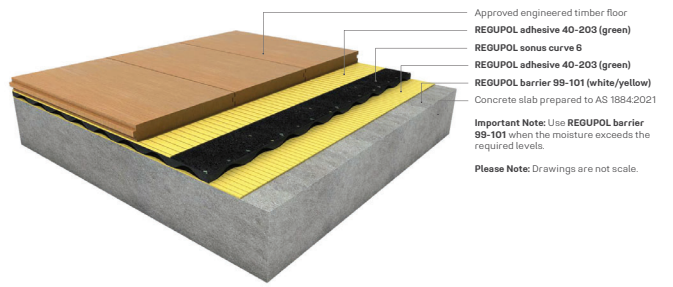
NON-BONDED ENGINEERED TIMBER

This **REGUPOL sonus curve 6** system reflects a typical residential application with approved engineered timber floor coverings. For all other applications please contact **REGUPOL** acoustic division.



DUAL BOND ENGINEERED TIMBER

This **REGUPOL sonus curve 6** system reflects a typical residential application with approved engineered timber floor coverings. For all other applications please contact **REGUPOL** acoustic division.





A SOUND CHOICE FOR HIGH PERFORMANCE

REGUPOL SONUS CURVE 8

REGUPOL sonus curve 8 is a high performance acoustic underlay, designed to reduce the transmission of impact sound generated by footfall noise.

Also suitable as a system under cement sheeting or plywood sheeting with selected floor coverings such as solid timber and approved engineered timber floors.

Suitable for green buildings, the REGUPOL sonus curve 8 is a sustainable product made from post-consumer end of life tyre bound with polyurethane.



This environmentally preferable product has been independently certified as meeting the requirements of Good Environmental Choice Australia GECA FCv3.0-2021 Floor Coverings Standard.

REGUPOL sonus curve 8 can be installed under screed beds as a complete system with stone, marble, tiles or selected floor coverings.



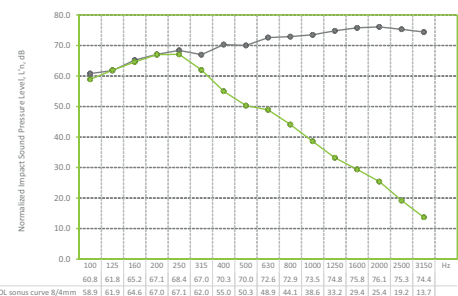
Available in:
 Rolls 1.15m x 201m
 Thickness 8mm dimpled

ACOUSTICAL PERFORMANCE

ENGINEERED TIMBER Normalised Impact Sound Pressure Levels
 Tested at CSIRO Clayton, in accordance with ISO 140-8: 2006 (E), ISO 140-6-2006, AS ISO 717.2-2004, ASTM E989-89. Test area 10.8m². Results can vary when different floors are installed and/or if bonded.

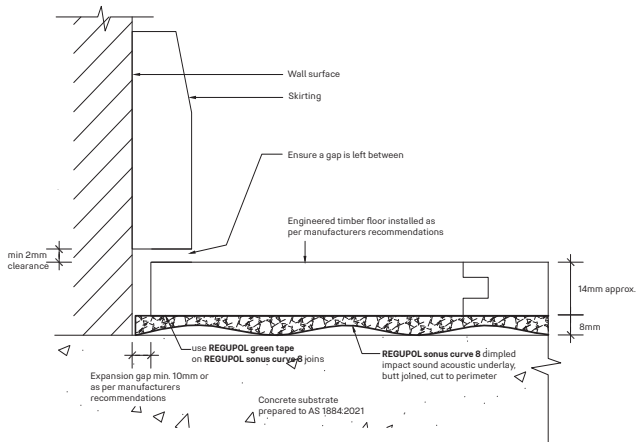
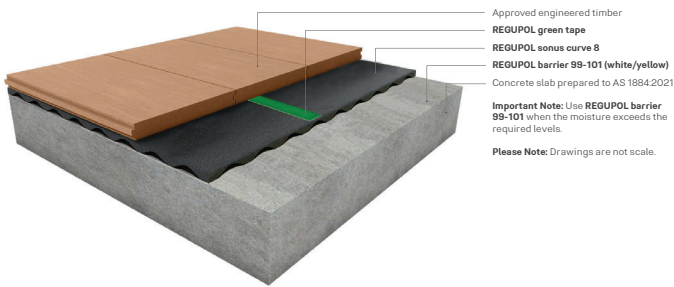
REPORT RG112
 Layer of 14mm engineered timber (floating), to REGUPOL sonus curve 8/4mm dimpled, to 150mm concrete slab (no ceiling).

Ln,w 57dB
 ΔLw 18dB
 53 IIC



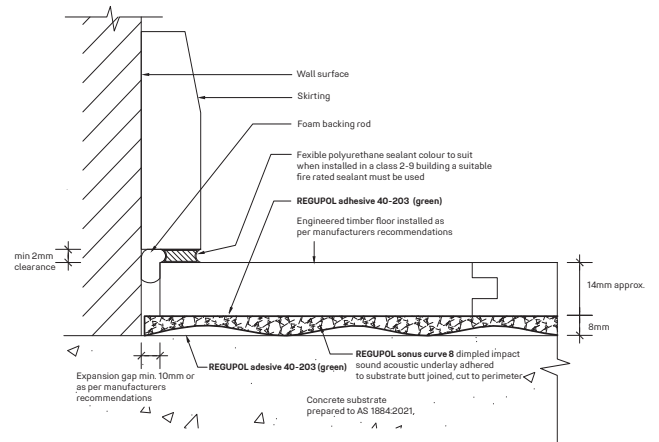
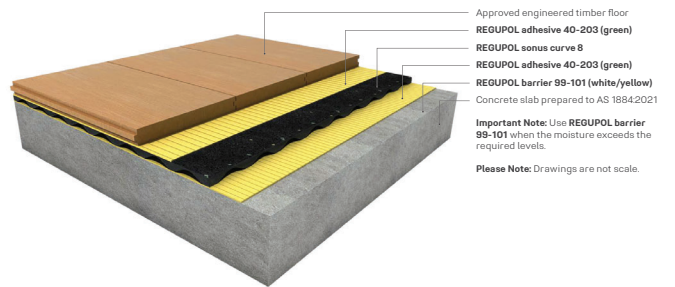
NON-BONDED ENGINEERED TIMBER

This **REGUPOL sonus curve 8** system reflects a typical residential application with approved engineered timber floor coverings. For all other applications please contact **REGUPOL** acoustic division.



DUAL BOND ENGINEERED TIMBER

This **REGUPOL sonus curve 8** system reflects a typical residential application with approved engineered timber floor coverings. For all other applications please contact **REGUPOL** acoustic division.





REGUPOL SONUS CURVE 17

REGUPOL sonus curve 17 is a high performance acoustic underlay, designed to reduce the transmission of impact sound generated by footfall noise.

Suitable for green buildings, the **REGUPOL sonus curve 17** is a sustainable product made from post-consumer end of life tyre bound with polyurethane.

This environmentally preferable product has been independently certified as meeting the requirements of Good Environmental Choice Australia GECA FCv3.0-2021 Floor Coverings Standard.

REGUPOL sonus curve 17 can be installed under bonded and unbonded screed beds as a complete system with stone, marble, tiles or selected floor coverings.

Also suitable as a system under cement sheeting or plywood sheeting with selected floor coverings such as solid timber and engineered timber floors.



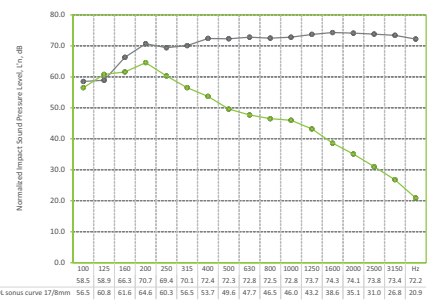
Available in:
 Rolls 1.25m x 101m
 Thickness 17mm dimpled

ACOUSTICAL PERFORMANCE

T&G TIMBER Normalised Impact Sound Pressure Levels - Indicative Result Only*
 Tested at CSIRO, sample was bonded together and fixed to the concrete slab. Sample size 1200mm x 1200mm.
 * Sample size was not full laboratory tested and is only indicative of result. Results can vary when different floors are installed and/or if bonded.

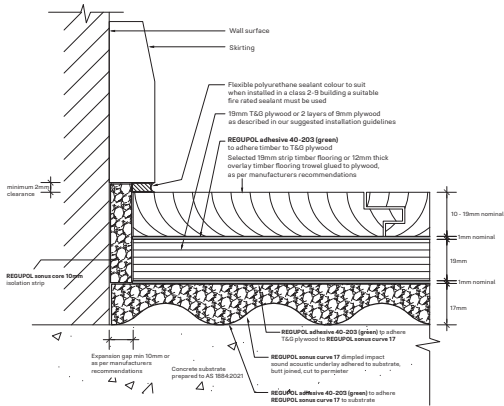
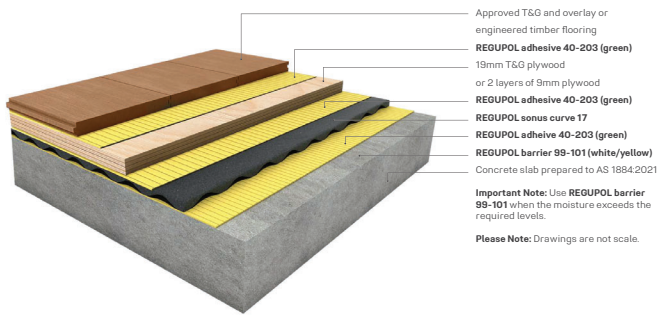
REPORT RG018
 Layer of 19mm T&G timber bonded to 18mm yellow tongue, bonded to **REGUPOL sonus curve 17/8mm**, to 170mm concrete slab.

Ln,w 53dB
 ΔLw 27dB
 55 IIC

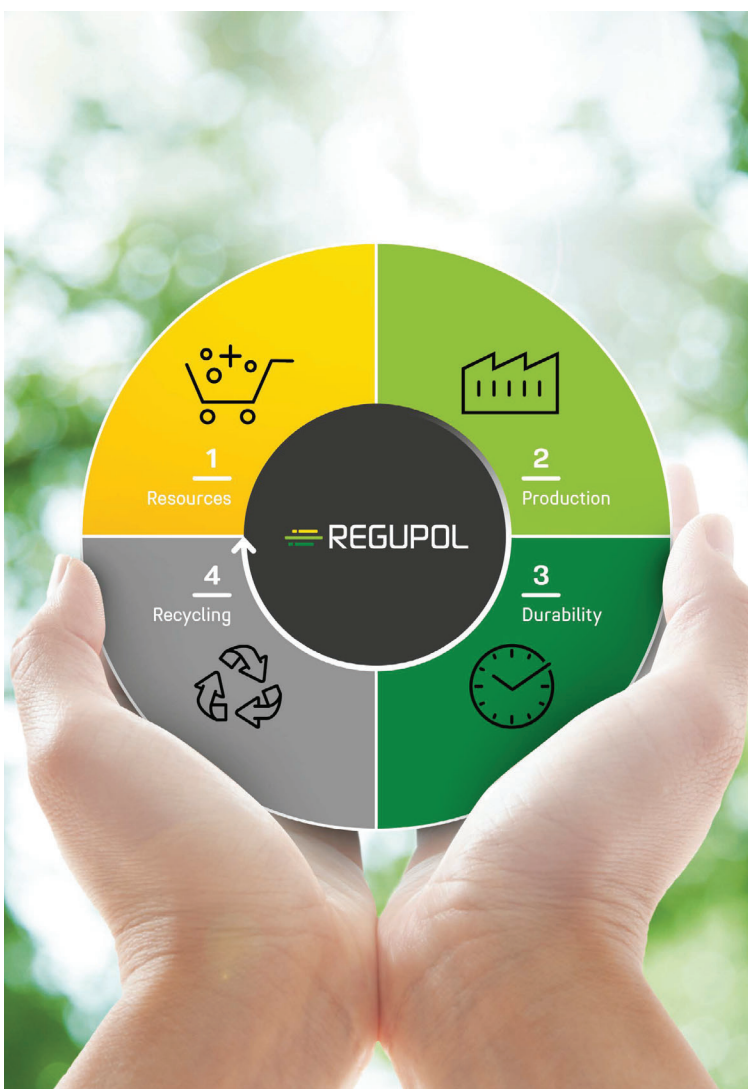


T&G / OVERLAY TIMBER FLOORS OVER PLYWOOD

This **REGUPOL sonus curve 17** system reflects a typical residential application with approved T&G and overlay timber floor coverings. For all other applications please contact **REGUPOL** acoustic division.



BUILD ON A TRADITION OF SUSTAINABILITY



REGUPOL Australia has a long history in sustainable rubber flooring and noise and vibration solutions, with over 35 years of experience supporting the Australian construction industry. Internationally, **REGUPOL Germany** marks 70 years of operation as a family-run business with an enduring legacy of innovation in recycled product manufacturing. **REGUPOL** remains committed to developing high-quality, sustainable products for the flooring, industrial, and construction sectors.

REGUPOL's focus on sustainability—producing eco-friendly, high-quality products—is reflected in its GECA, Cradle to Cradle Certified and EPD certifications. These trusted accreditations demonstrate our dedication to responsible manufacturing and environmental stewardship. They facilitate certification for green building design projects, helping to meet sustainability criteria efficiently and effectively.

Whether it's a new construction project or renovation, **REGUPOL's** expertise and certified products provide reliable solutions that contribute to both the functional performance and sustainability of the building.

NATSPEC
Need help writing a specification?
 The **REGUPOL sonus** range of acoustic underlays is installed under various floor coverings and standards.

To simplify the specification process, follow the NATSPEC branded work section: 0473p REGUPOL (acoustic floor underlays). Visit www.natspec.com.au

INSTALLATION GUIDELINES
 The **REGUPOL sonus** acoustic underlays are engineered to meet the highest sound insulation standards, providing an effective solution for noise control in various environments. To ensure optimal performance, closely following the manufacturer's installation guidelines is crucial. This includes adhering to the Australian Standard AS 1884:2021 for resilient sheet and tile flooring installation practices.

OUR ACCREDITATIONS
GECA
 The early adoption of third-party certification has seen many **REGUPOL sonus** acoustic underlay products used in sustainable building projects. The **REGUPOL sonus** acoustic range has been GECA certified since 2008. The GECA standard is GECA FCv3.0-2021 Floor Coverings. Visit www.geca.eco

EPD
 The **REGUPOL** rolls and sheets Environmental Product Declaration, as per ISO 14025 and EN 15804+A2, covers all **REGUPOL sonus** acoustic underlay products. Visit www.eco-platform.org

CRADLE TO CRADLE CERTIFIED
REGUPOL has 126 sports, acoustics, construction, and load-securing products, receiving the Cradle to Cradle Certified® at the Bronze level for standard v3.1. Cradle to Cradle Certified® is a registered trademark of the Cradle to Cradle Product Innovation Institute (C2CPII). Products with Cradle to Cradle Certification are marked in this brochure with the certified logo. Visit www.C2ccertified.org

GBCA RESPONSIBLE PRODUCT VALUE
 Green Star is the Green Building Council of Australia's sustainability rating system for the built environment. It is used to rate new and existing buildings, new fit-outs, and new precinct developments. The Green Building Council of Australia recognises Responsible Products that may contribute to a Green Star rating through its Responsible Credits.

Products may be certified by more than one initiative. This may increase the RPV of the product. Information on initiatives and how products can contribute to a Green Star rating can be found at: new.gbca.org.au/green-star/the-responsible-products-program





REGUPOL Australia Pty. Ltd.

155 Smeaton Grange Road
Smeaton Grange NSW 2567
phone +61 2 4624 0050
acousticsales@regupol.com.au

REGUPOL Germany GmbH & Co. KG

REGUPOL America LLC

REGUPOL Acoustics Middle East FZE

REGUPOL Schweiz AG

REGUPOL Zebra Athletics LLC

BSW Shanghai CO. LTD.

www.acoustics.regupol.com.au